



AMMA ELISE CARIKER

Glee Club 1, 4; Girl Reserves 2, 3; Band 2; Basketball 1, 2; Home Economics Club 3; Class Reporter 3; Chorus 1; 4-H Club 1, 4.

ETHEL COWART

Glee Club 1, 2, 3, 4; Field Meet—Quartet 4; Chorus 2, 3, 4; Basketball 1, 2, 3; 4-H Club 1, 2, 3, 4,

GRADDIS ERWIN

Glee Club 1, 2, 3, 4; Field Meet—Quartet 1, 3; Chorus 1, 2, 3, 4; Band 1; Home Economics Club 2, 3.

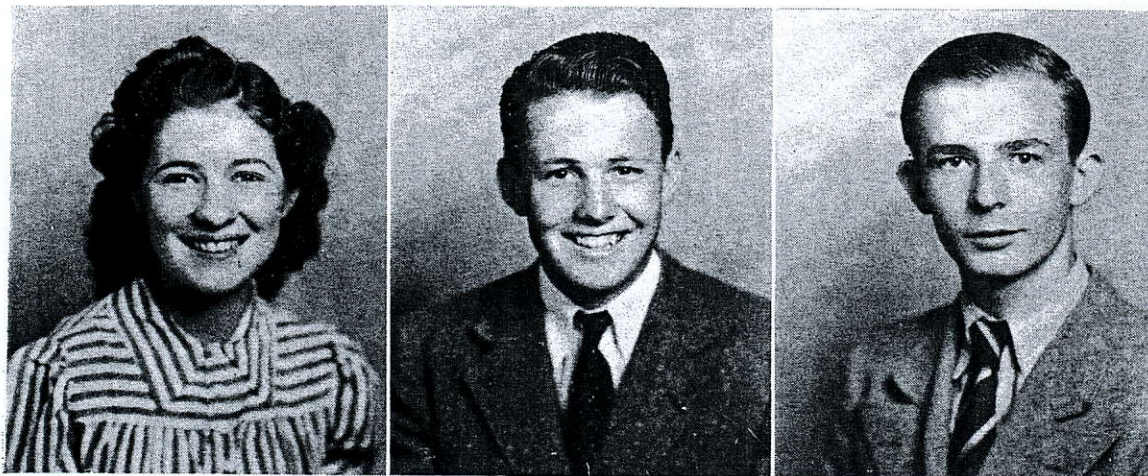


HAROLD GORDON

Hi-Y 1, 2, 3, Reporter 2; Glee Club 4; Delphians 1, 2, 3, 4, President 4; Field Meet—Elementary Civics 1, World History 2, American History 3, Problems of American Democracy 4; Football 1, 2, 3, 4; Baseball 1, 2, 3, 4; Basketball 1, 2, 3, 4; President of Class 1; Spotlight Staff—Sports Editor 2, Business Manager 4; Fidelis Staff—Sports Editor 3, Circulation Manager 4.

LESSIE GRIFFIN

Cleveland High School 1; Pace High School 2; Glee Club 3, 4; Delphians 3, 4, Historian 4; Field Meet—English 3, 4; Spotlight Staff—Assistant Editor 4; Fidelis Staff—Associate Editor 4.



EDNA MAE PEACOCK

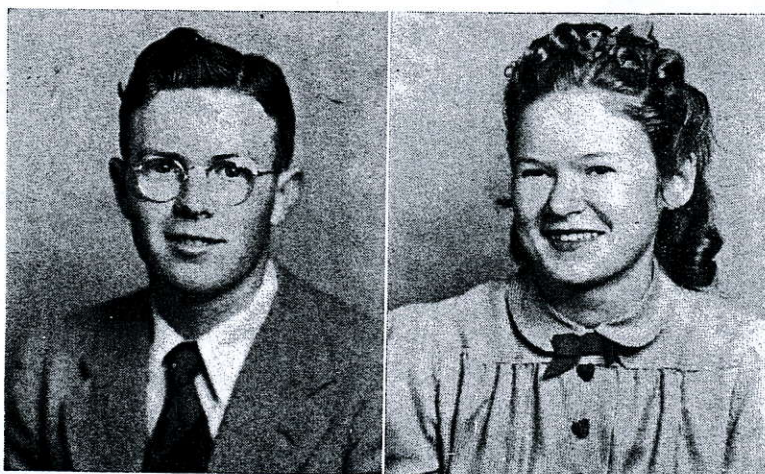
Glee Club 1, 2, 4; Girl Reserves 3; Home Economics Club 3; Chorus 2, 4; 4-H Club 3, 4.

VERNON SPRINGER

Drew High School 1, 2; Glee Club 4, Vice President; F. F. A. 3, 4, President 4; Basketball 3, 4; Baseball 3, 4; Football 4; Fidelis Staff—Senior Class Editor 4.

GEORGE D. THOMAS

Hi-Y 1, 2, 3, 4; Delphians 1, 2, 3, 4; Band 1, 2, 3, 4; Field Meet—Algebra I, English II; Football 4, Basketball 4, Baseball 4.



F. W. WOOD

Eupora High School 1; Football 3; Basketball 4; Glee Club 2, 3, 4, Reporter 4; F. F. A. 3, 4; 4-H Club 2, 3, 4; Band 2, 3, 4; Field Meet—Agriculture 4; Delphians 4.

RUTH YOUNG

Gulfport 1; Mars Hill 2, 3; Girl Reserves 4.



SOPHOMORES



FRONT ROW: James Browning, Mary Helen Mullins, Violet Wachter, Mable Livingston, Virgil Harrington.
SECOND ROW: Chester Hollis, Edna Earle Thomas, Ardis Cochran, Waurine Turner, Mable Ruth Proctor, Mary Eula McNeer, Beatrice McCarty.
THIRD ROW: Sarah Jane Smith, Clara Mae Griffin, Gladys Hazzard, Leroy Bailey, M. J. Cowart, Hoyt Daves, Hershel Walker.

FRESHMEN



FRONT ROW: Henry Wachter, Voncile Brown Clark, Lillian Alice Young, Betty Sue Rayner, Helen Phoebe Graves, Patricia Park.
SECOND ROW: Thomas McCool, Dorothy Gaut, Alice Lou Hutchinson, Mary Cowart, Mary Smith.
THIRD ROW: Harold Moreland, William Peacock, Theodore Alford, B. L. Kiker, Harry Pat Brooks, Dorothy Mullins.

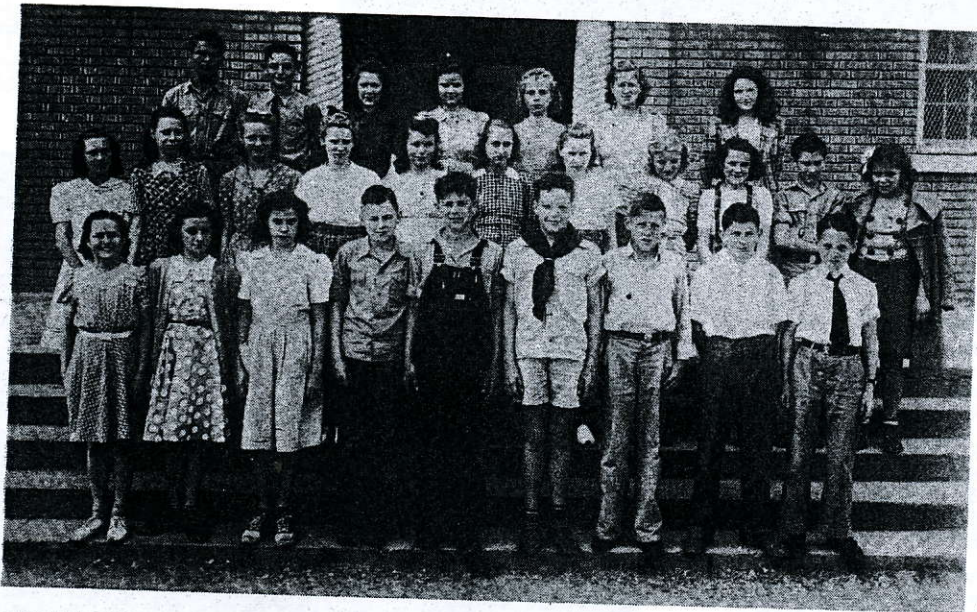
THE FIDELIS

EIGHTH GRADE



FRONT ROW: Clay Rayner, Willena McGarrh, Geneva Hutchinson, Martha Pate, Betty Harrington, Nita Junkin, Travis Bailey, Quenton Miller.
SECOND ROW: Jewel Hollis, Mary Lou McCain, Claude Hooper, Bud Daves, Jack Moreland, Glen Robertson.
THIRD ROW: Bennie Millican, Enzor Cullum, Marguerite Myers, Charles Gregory, Annie Mae Peeples.

SEVENTH GRADE



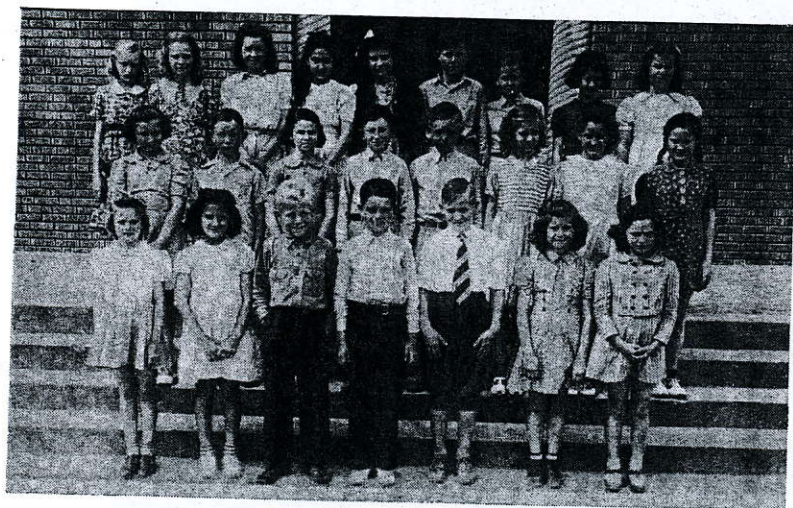
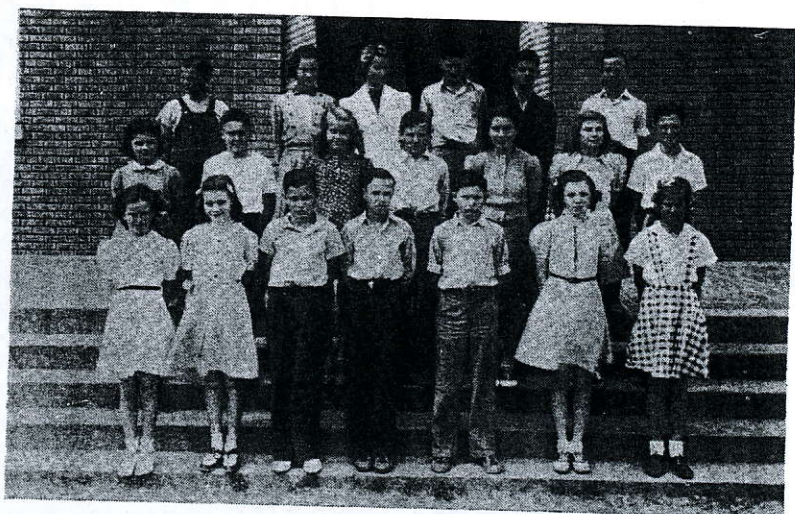
FRONT ROW: Mary Evelyn Thomas, Annette Abernethy, Allen Rayner, Jack Graves, Oscar Hutchinson, Bobby Hallman, Raymond Horton, Monroe Prewitt, Joe Sturdivant.
SECOND ROW: Jacqueline Livingston, Alice Cochran, Virginia Alford, Mary Catherine Peeples, Sammie McGovern, Zelma Griffin, Betty Sue Collier, Nellar Margie Sides, Murlene Turner, Clayton Ray, Mary Quindred Miller.
THIRD ROW: Raleigh Junkin, James Erwin, Aliece Ray, Margie Louise Wood, Arlene Baker, Mary Wilson, Theresa Brooks.

SIXTH GRADE

FRONT ROW—Dorothea Pate, Martha Cochran, Lewis McGovern, Sidney Smith, Lonzo Peacock, Marjorie Wood, Susie McNeer.

SECOND ROW — Ramona Perry, Fred Wiley Young, Naomi Hollis, S. E. Fowlef, Herbert Dell Henderson, Louise Walker, Billy Latham.

THIRD ROW—W. C. Junkin, Mildred Roberts, Margie Lee Scott, Henry Hudson, Peter Damato, Dennis Cowart.



FIFTH GRADE

FRONT ROW — Marjorie Wells, Mary Damato, Robert Harrington, Charles Mosely, George Fletcher, Eileen Fowler, Vivian Wilson.

SECOND ROW—Louise Pollard, A. C. Prewitt, Emma Jane Gilliam, James McCain, Glen McCool, Millie Burrus, Grace Jones, Mary McGovern.

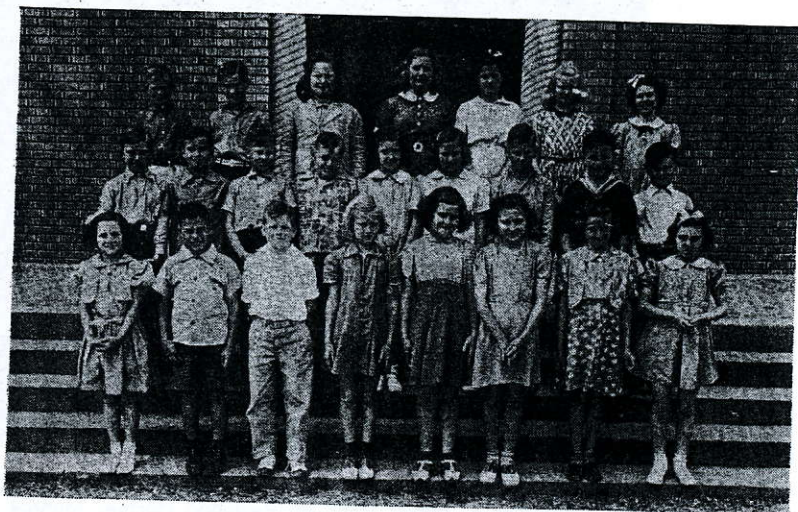
THIRD ROW—Lona Black, Alice Mae Junkin, Mildred Slayton, Mary Leona Fink, Antionette Damato, James Bruce, Melvin Bruce, Carolyn Sturdivant, Melba Millican.

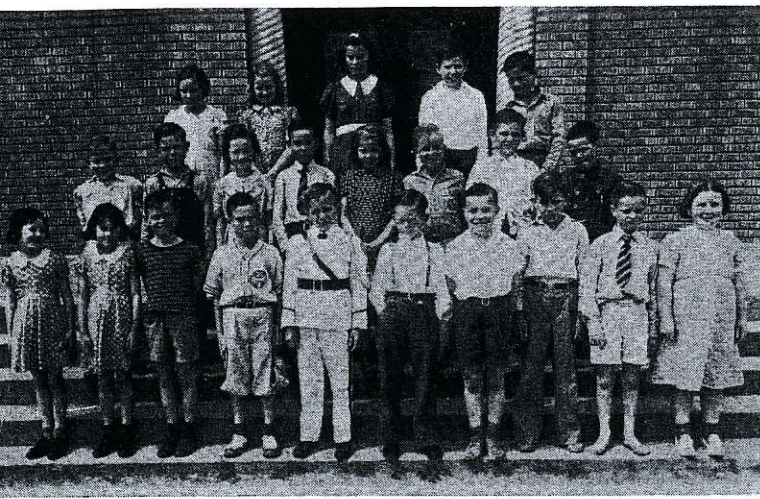
FOURTH GRADE

FRONT ROW — Marie Wachter, Anthony Brocato, Perkins Cochran, Billy Katherine Raby, Marguerite Hawkins, Jeanette Elliot, Anna Laura Hutchison, Ester Lee Livingston.

SECOND ROW—Albert Whatley, Robert Henderson, John Hulon Crowder, Jimmie Smith, Joyce Ray, Betty Fletcher, Basil McNeer, Elaquay Riley, Douglas Hazzard.

THIRD ROW—Paul Wilson, Horace Ray, Billie Jo Ashley, Leatrice Mosley, Lona Mae High, Wilma Barr, Geraldine Clemons.





THIRD GRADE

FRONT ROW—Eleanor Bailey, Elsie Bailey, Jim Pate, Benny Livingston, Henry McGarrh, William Livingston, John Dixon, W. C. Ray, Allison Roberts, Mary Sue Black.

SECOND ROW—Charles Moreland, Claudel Hutchinson, Helen Livingston, Travis Henderson, Anna Laura Bruce, James Baker, Robert Carol, T. P. Sullivan.

THIRD ROW—Mary Louise Gooden, Helen Sue Bogue, Helen Andrew, Donald Wright, Talmadge Hudson.

SECOND GRADE

FRONT ROW—Martha L. Sturdivant, Sara Anne Bogue, James Wright, Frank Greganti, Billy Mosley, James Horton, Billy Jones, Kenneth Millican, Michie Miller, Betty Jean Casey.

SECOND ROW—Lewis Simms, Cannon Ray, Freddie Cooke, Earl Mosley, Travis Slayton, Kathryn Hudson, Howard Hooper, Johnnie Gilliam, Frances Clemons, Betty Sue Wells.

THIRD ROW—Kirby Elliot, Charles Burke, Boyd Ray, Gwendolyn Barr, Harley Sturdivant, Helen McCain, Lester Hutchinson, Bobby Hawthorne.



FIRST GRADE

FRONT ROW—Jimmy T. Roberts, Mary Frances Greganti, Dorothy Livingston, James Hawkins, Fern Henderson, J. B. Griffin, Milton Ray, H. T. Hutchinson.

SECOND ROW—Bobby Jones, Joy McNeer, Virginia Scott, Frances Prewitt, Bobby Mosley, Leslie Dixon, Glendon Baker, Mary Raby, W. L. Sturdivant.

THIRD ROW—Joan Wilson, Mary Elizabeth Peacock, Eva Allday, Vedia Wilson, Clarence Cariker, Donald Hutchinson, Annie Pearl Lindley, Doris Barr, Bobby Cochran, Sharline Henson, Melvin Baker.